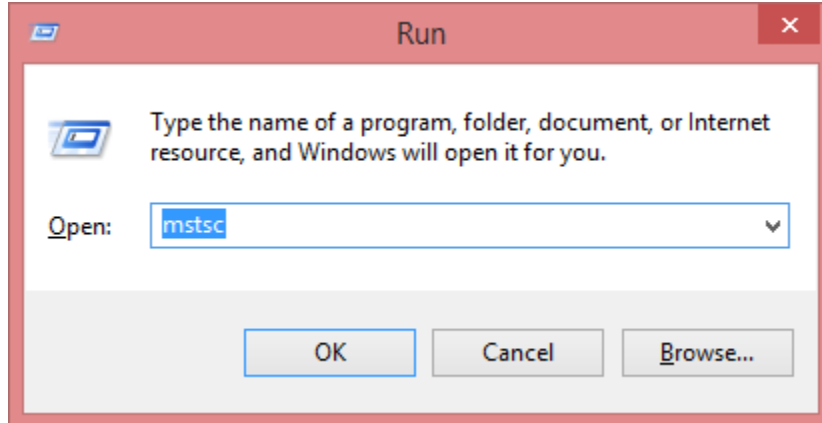
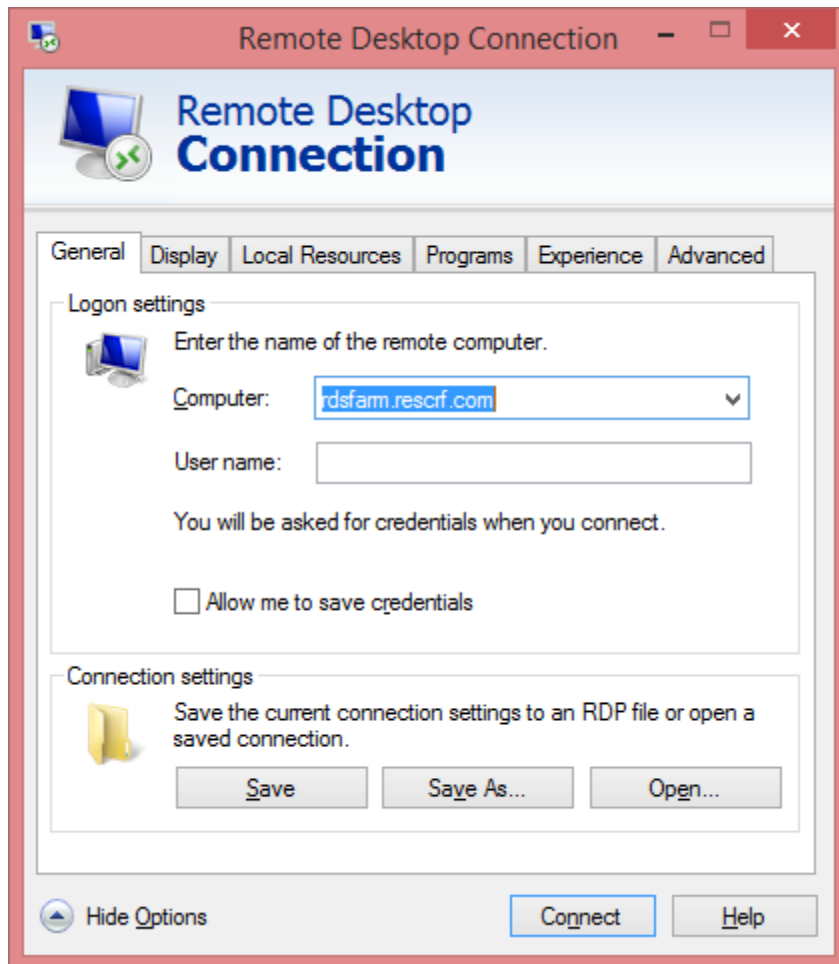


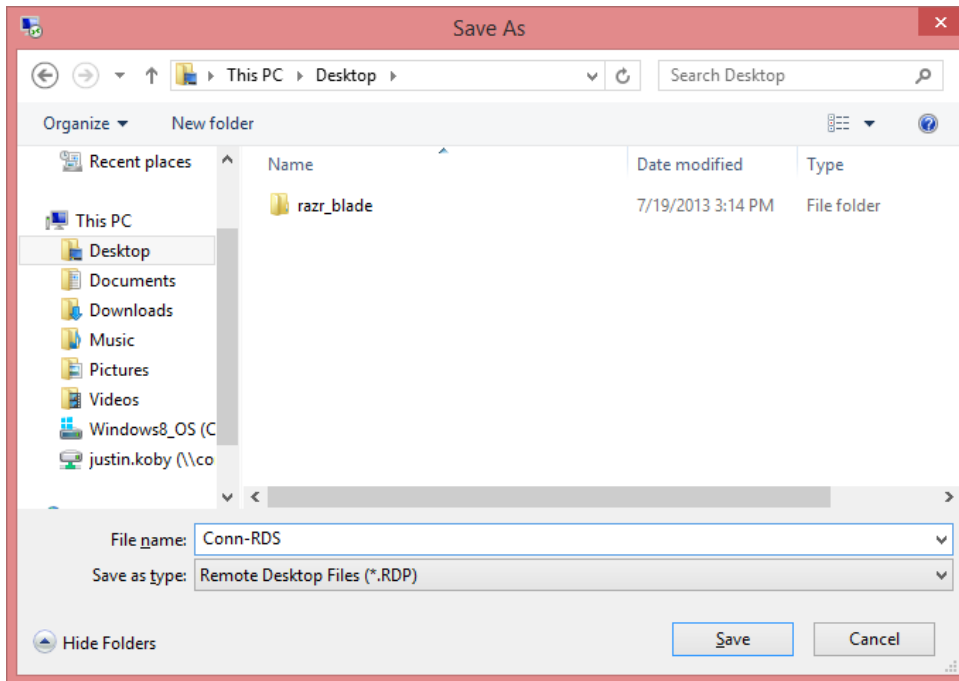
Connect the Remote Desktop Connection



Press "Start & R", and enter "mstsc" in the box, then click ok.



Enter "rdsfarm.rescrf.com" as the computer name. Then choose "Options". To save this for the future, select "Save As"



Choose “Desktop” on the left, then enter “Conn-RDS” as the file-name, and click “Save.”

In the future, the connection should be on your desktop that you can simply double-click the shortcut on the desktop to connect to the server. Remember, when you are OUTSIDE of the office, you need to connect the VPN connection BEFORE connecting the Remote Desktop Connection.